

GN 612.2 | Lever indexing plungers

Rest position, steel



- 1
- 2
- 3
- 4
- 5
- 6
- 7
- 8
- 9
- 10
- 11
- 12
- 13
- 14
- 15
- 16
- 17
- 18

- BODY**
Black-oxide steel.

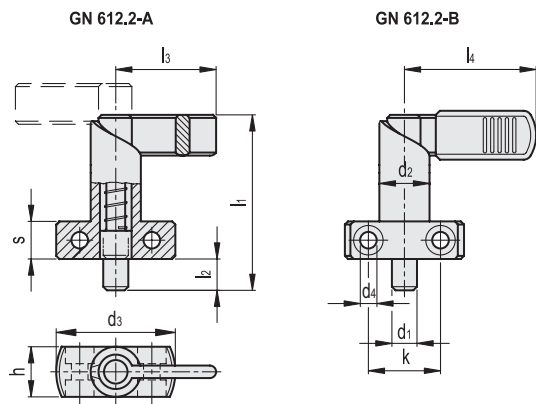
- PLUNGER**
Nitrided steel.
Suggested tolerance for matching hole = H7.

- LEVER**
Black-oxide steel.

- LEVER COVER**
High-resilience polyamide based (PA) technopolymer, black colour, matte finish.

- STANDARD EXECUTIONS**
 - **GN 612.2-A:** without lever cover.
 - **GN 612.2-B:** with lever cover.

- FEATURES AND APPLICATIONS**
GN 612.2 indexing plungers are used when the plunger must be retracted quickly.



Conversion Table	
1 mm = 0.039 inch	
d1	
mm	inch
6	0.24
8	0.31
10	0.39
12	0.47

METRIC

GN 612.2-A		d1											Spring preload	Spring max load	
Code	Description	Plunger -0.05 Hole H7	d2	d3	d4	h	k	l1	l2	l3	s	[N]	[N]	⚖	
GN.34431	GN 612.2-6-16-A	6	16	35	5.5	16	20	56	10	32	12	12	32	82	
GN.34436	GN 612.2-8-16-A	8	16	35	5.5	16	20	56	10	32	12	12	32	84	
GN.34441	GN 612.2-8-20-A	8	20	40	5.5	20	22	69	12	37	15	21	58	167	
GN.34446	GN 612.2-10-16-A	10	16	35	5.5	16	20	56	10	32	12	12	32	86	
GN.34451	GN 612.2-10-20-A	10	20	40	5.5	20	22	69	12	37	15	21	58	169	
GN.34456	GN 612.2-12-20-A	12	20	40	5.5	20	22	69	12	37	15	21	58	170	

GN 612.2-B		d1											Spring preload	Spring max load	
Code	Description	Plunger -0.05 Hole H7	d2	d3	d4	h	k	l1	l2	l4	s	[N]	[N]	⚖	
GN.34432	GN 612.2-6-16-B	6	16	35	5.5	16	20	56	10	42	12	12	32	85	
GN.34437	GN 612.2-8-16-B	8	16	35	5.5	16	20	56	10	42	12	12	32	86	
GN.34442	GN 612.2-8-20-B	8	20	40	5.5	20	22	69	12	52	15	21	58	170	
GN.34447	GN 612.2-10-16-B	10	16	35	5.5	16	20	56	10	42	12	12	32	90	
GN.34452	GN 612.2-10-20-B	10	20	40	5.5	20	22	69	12	52	15	21	58	173	
GN.34457	GN 612.2-12-20-B	12	20	40	5.5	20	22	69	12	52	15	21	58	180	

Indexing and positioning elements